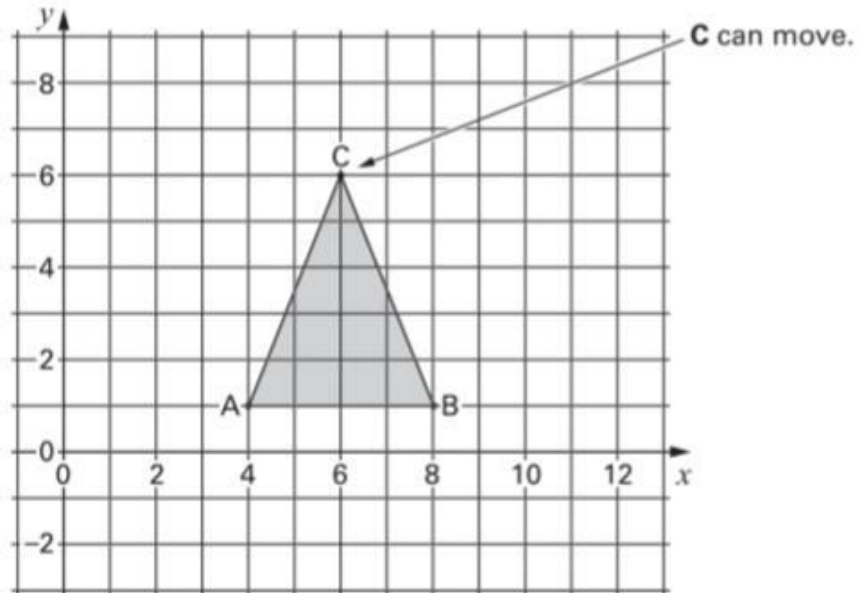


X and Y Coordinates-Questions

Key Stage 3: 2003 Paper 1 Level 3-5

1.

17. On this square grid, **A** and **B** must not move.



When C is at (6, 6), triangle ABC is **isosceles**.

- (a) C moves so that triangle ABC is still **isosceles**.

Where could C have moved to?

Write the coordinates of its new position.

 (.....,.....)

.....
1 mark

- (b) Then C moves so that triangle ABC is **isosceles and right-angled**.

Where could C have moved to?

Write the coordinates of its new position.

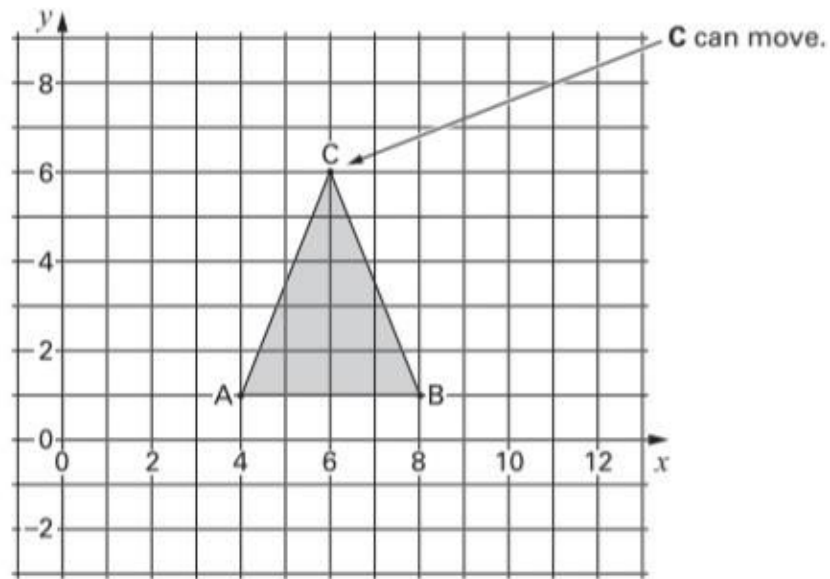
 (.....,.....)

.....
1 mark

Key Stage 3: 2003 Paper 1 Level 4-6

2.

12. On this square grid, **A** and **B** must not move.



When C is at (6, 6), triangle ABC is **isosceles**.

(a) C moves so that triangle ABC is still **isosceles**.

Where could C have moved to?

Write the coordinates of its new position.

 (.....)

1 mark

(b) Then C moves so that triangle ABC is **isosceles and right-angled**.

Where could C have moved to?

Write the coordinates of its new position.

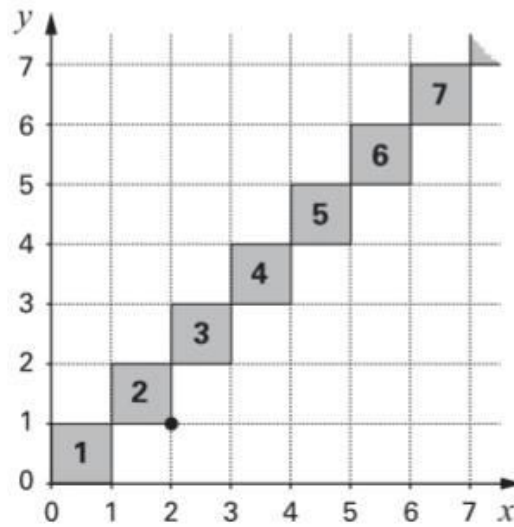
 (.....)

1 mark


Key Stage 3: 2004 Paper 2 Level 3-5

3.

11. I put square tiles on a large grid so that the tiles touch at the corners.
The diagram shows part of my diagonal pattern.



- (a) The **bottom right-hand** corner of **tile 2** is marked with a ●
Write the coordinates of this point.

 (,)

1 mark

- (b) **Tile 4** touches two other tiles.

Write the coordinates of the points where tile 4 touches two other tiles.

 (,) (,)

1 mark

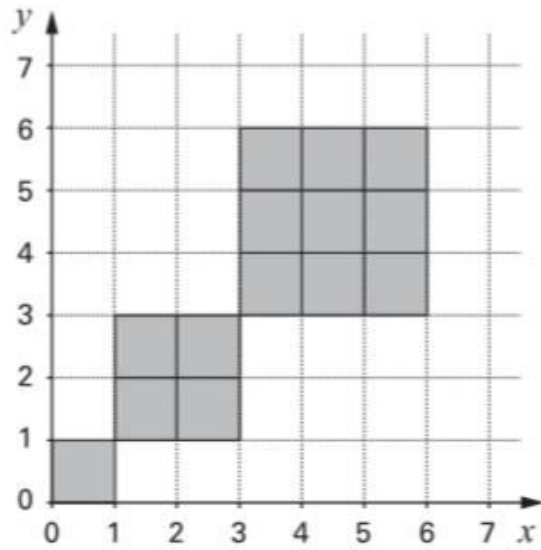
- (c) Write the coordinates of the points where **tile 17** touches two other tiles.

 (,) (,)

1 mark

(d) I have **30 tiles** to make a pattern on a grid.

The pattern is a series of squares.



I have used some of the 30 tiles to make my pattern.

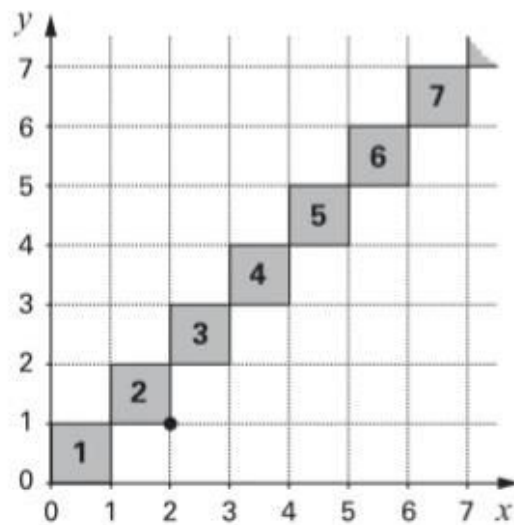
Do I have enough tiles left to make the **next square**, of side length 4?

Show working to explain your answer.




2 marks

4. I put square tiles on a large grid so that the tiles touch at the corners.
The diagram shows part of my diagonal pattern.



- (a) The **bottom right-hand** corner of **tile 2** is marked with a ●
Write the coordinates of this point.

 (,)

1 mark

- (b) **Tile 4** touches two other tiles.

Write the coordinates of the points where tile 4 touches two other tiles.

 (,) (,)

1 mark

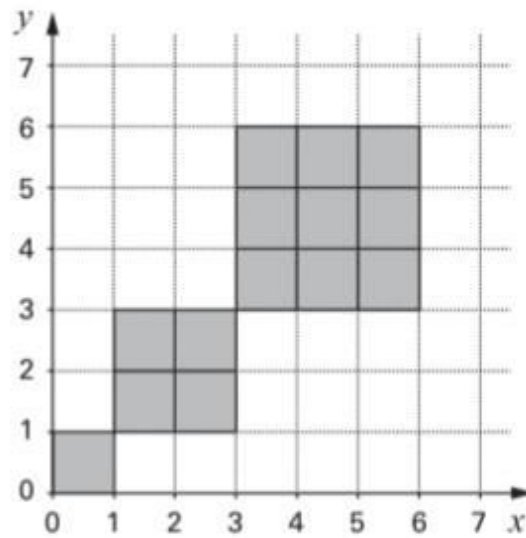
- (c) Write the coordinates of the points where **tile 17** touches two other tiles.

 (,) (,)

1 mark

(d) I have **30 tiles** to make a pattern on a grid.

The pattern is a series of squares.



I have used some of the 30 tiles to make my pattern.

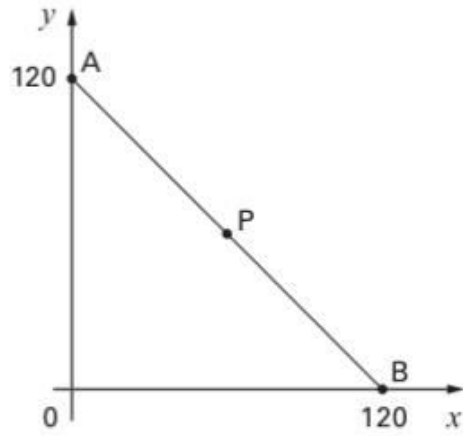
Do I have enough tiles left to make the **next square**, of side length 4?

Show working to explain your answer.



2 marks

23. P is the **midpoint** of line AB.



What are the coordinates of point P?

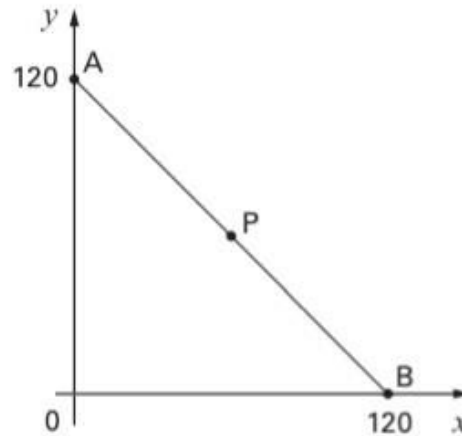
 P is (.....,.....)

1 mark

Key Stage 3: 2005 Paper 1 Level 4-6

6.

16. (a) P is the **midpoint** of line AB.



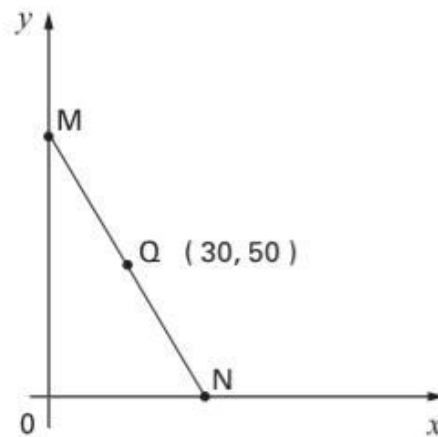
What are the coordinates of point P?

 P is (..... ,)

.....
1 mark

(b) Q is the **midpoint** of line MN.

The coordinates of Q are (30, 50)



What are the coordinates of points M and N?

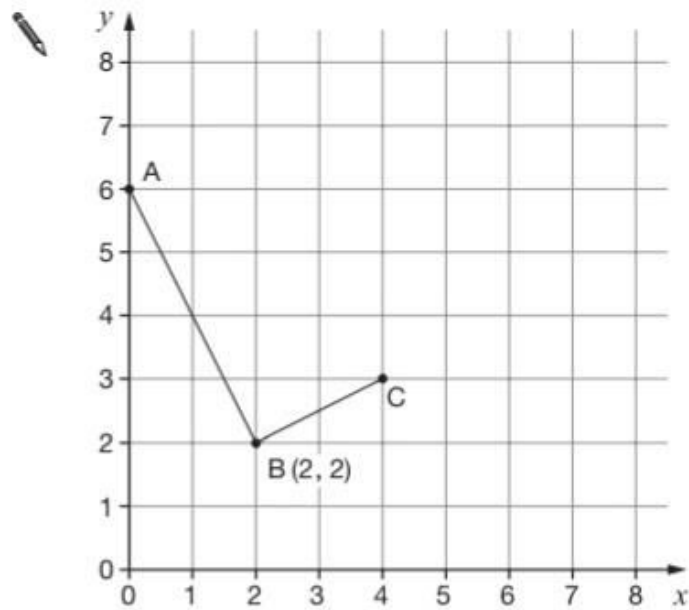
 M is (..... ,)

.....
1 mark

N is (..... ,)

.....
1 mark

8. Look at the graph.



(a) Write down the coordinates of points A and C.

 A is (_____ , _____)

 1 mark

C is (_____ , _____)

 1 mark

(b) Point D can be marked so that ABCD is a **rectangle**.

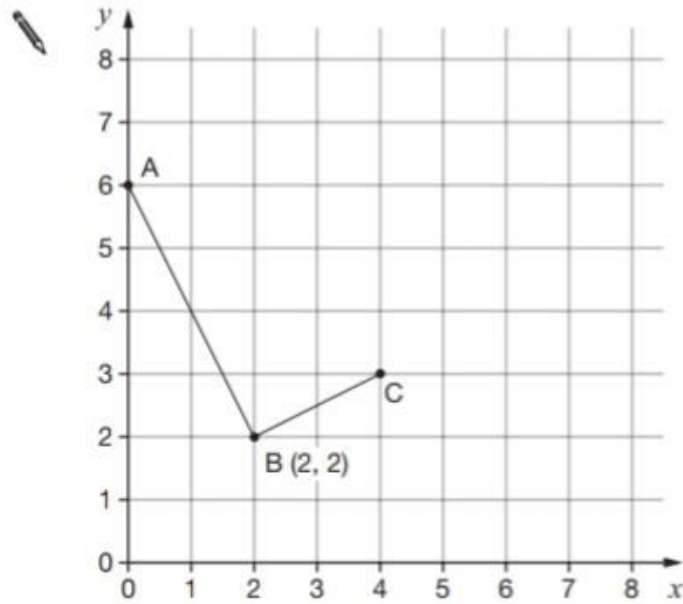
Mark point D accurately on the graph.

 1 mark

Key Stage 3: 2007 Paper 2 Level 4-6

8.

1. Look at the graph.



- (a) Write down the coordinates of points A and C.

 A is (_____ , _____)

 1 mark

C is (_____ , _____)

 1 mark

- (b) Point D can be marked so that ABCD is a **rectangle**.

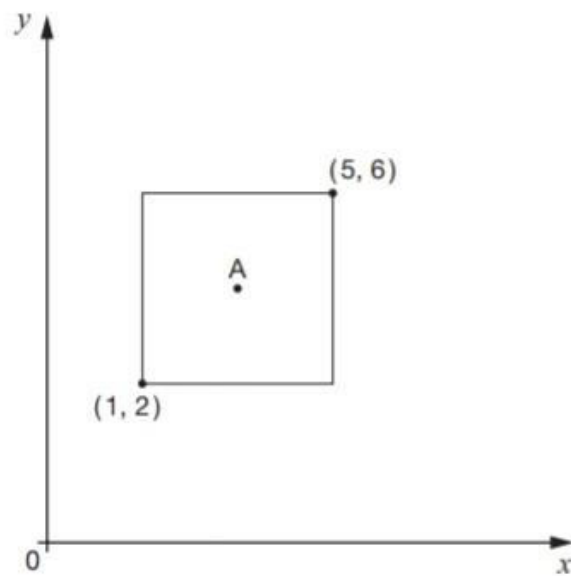
Mark point D accurately on the graph.

 1 mark

Key Stage 3: 2008 Paper 1 Level 3-5

9.

23. Look at the square drawn on the graph.



Not drawn accurately

Point A is the centre of the square.

What are the coordinates of point A?



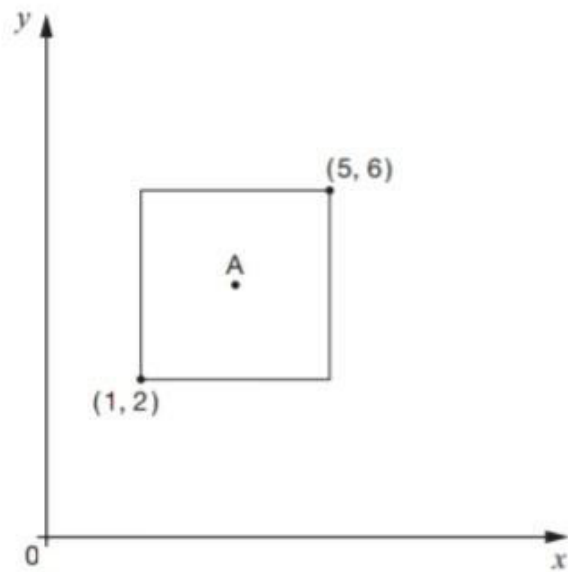
A is (_____ , _____)

2 marks

Key Stage 3: 2008 Paper 1 Level 4-6

10.

18. Look at the square drawn on the graph.



Not drawn
accurately

Point A is the centre of the square.

What are the coordinates of point A?

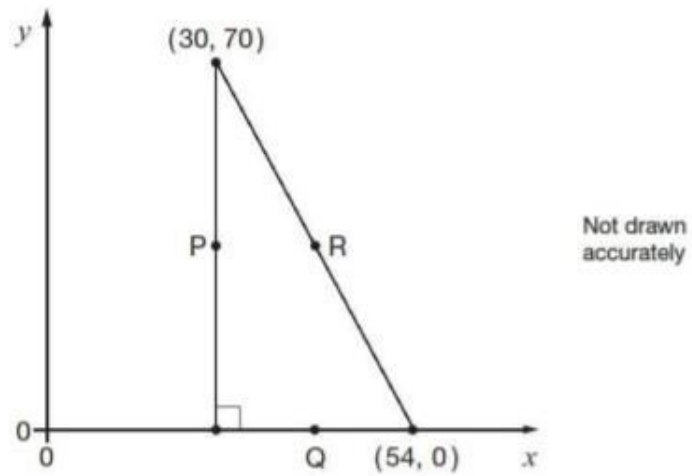


A is (_____ , _____)

2 marks

11.

19. The diagram shows a right-angled triangle.



P, Q and R are the **midpoints** of the sides of the triangle.

Work out the coordinates of P, Q and R.

 P is (_____ , _____) _____
1 mark

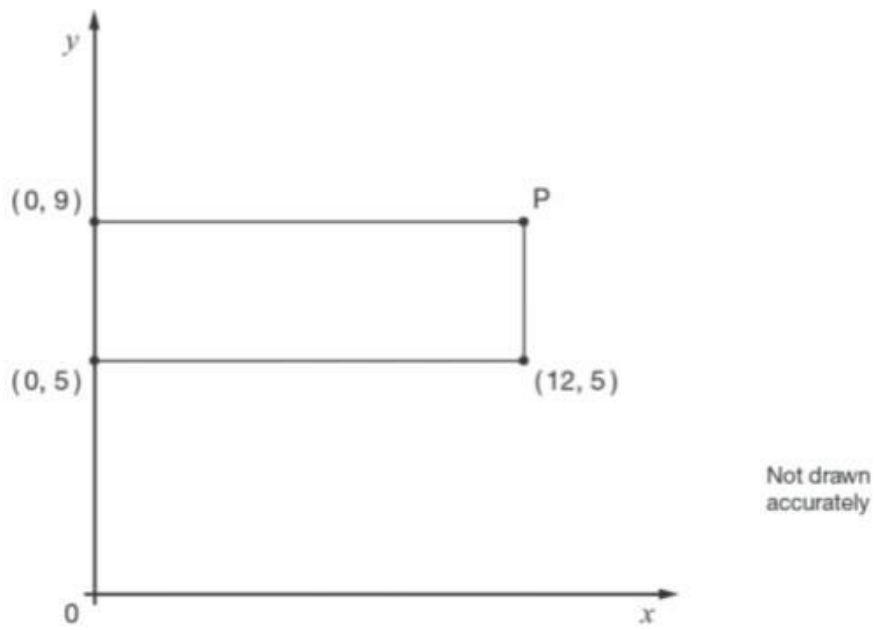
 Q is (_____ , _____) _____
1 mark

 R is (_____ , _____) _____
1 mark

Key Stage 3: 2010 Paper 1 Level 3-5

12.

18. The graph shows a **rectangle**.



Write the coordinates of point P



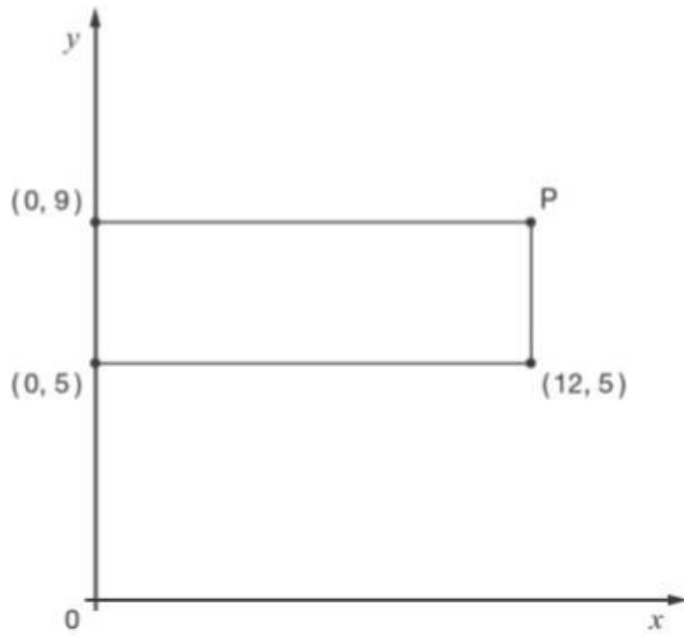
(_____ , _____)

2 marks

Key Stage 3: 2010 Paper 1 Level 4-6

13.

8. The graph shows a rectangle.



Not drawn
accurately

Write the coordinates of point P



(_____ , _____)

2 marks